

Concert Program

September 17, 2025

Opening Act

Cello: Professor Tom Kornberg

Piano: Jilian Lamprecht



Cinq pièces en trio – Jacques Ibert

Clarinet: Clarisse Ollivier

Oboe: Sarah Mikami, Emeline Carré

Bassoon: Helena Gabarró Serrano



String quartet n°2 – Alexandre Borodin

-I: Allegro Moderato

-III: Notturmo

Violin: Jakob Adomeit, Andréa Maalouf

Viola: Paul Castarède

Cello: Paul Delort Laval

Clarinet quintet, K. 581 – W.A. Mozart

-II: Larghetto

-IV: Allegretto con variazioni

Clarinet: Jorge Colio Zardoya, Milica Meier

Viola: Amélie Lavrard-Meyer

Violin: Ondrej Zikmund, Elsa Maneval

Cello: Paul Delort Lava



Beethoven Cello Sonatas No. 1, op. 5,

Schumann Fantasiestücke No. 1, op. 73 ,

Piazzola "Le grand tango"

Piano: Jilian Lamprecht

Cello: Zoe Kettiger

OChE members

VIOLIN



Jakob Adomeit

Jakob is pursuing a Bachelor's degree in Physics at EPFL and has been playing the violin for 14 years. Passionate about chamber music, he regularly performs with the OChE and is also a member of its committee.



Andréa Maalouf

Andréa is a first-year Computer Science student at EPFL and an enthusiastic violinist.



Elsa Maneval

Elsa is a PhD candidate in Mathematics at EPFL and enjoys playing the violin alongside her research.



Ondřej Zikmund

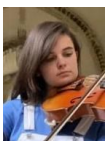
Ondřej Zikmund is a Master's student in Physics at EPFL, with a focus on plasma physics and thermonuclear fusion. He has been a member of the OChE since 2021, playing second violin.

VIOLA



Paul Castarède

Paul is studying for a Bachelor's degree in Mathematics at EPFL and plays the viola.



Amélie Lavrard-Meyer

Amélie is a violist and Life Sciences Engineering student at EPFL.

CELLO



Paul Delort Laval

Paul, from Annecy, France, is studying Architecture at EPFL and plays the cello.

CLARINET



Jorge Colio Zardoya

Jorge, from Spain, is completing a Master's in Materials Science and Engineering at EPFL. He has been playing the clarinet for many years.



Milica Meier

Milica studies Environmental Sciences and Engineering at EPFL and enjoys performing on the clarinet.



Clarisse Ollivier

Clarisse is pursuing studies in Environmental Engineering and Energies. Trained at the Conservatoire à Rayonnement Régional de Versailles, she has been playing the clarinet for 16 years.

OBOE



Emeline Carré

Emeline, from France, is in her third year of oboe studies at HEMU (Haute École de Musique de Lausanne).



Sarah Mikami

Sarah is completing a Master's in Neuroengineering at EPFL, where she studies brain networks using resting-state fMRI. She began learning the oboe during her studies and is delighted to perform with the OChE.

BASSOON



Helena Gabarró Serrano

Helena, from Barcelona, has been playing the bassoon for over 15 years. She studied Biochemistry and now works as a laboratory technician at the Programmable Biomaterials Laboratory at EPFL.

Invited musicians



Zoé Kettiger, Cello

Zoé is a Lausanne-based cellist who has been performing since a young age. Alongside her musical activities as a soloist and chamber musician, she is pursuing studies in environmental sciences at EPFL and the University of Geneva.



Jilian Lamprecht, piano

Jilian obtained his MSc in Life Sciences Engineering from EPFL, completing his Master's thesis in the Habib Lab on the role of epigenetic modifications in osteogenesis after an internship at Readily3D. Jilian also enjoys playing guitar and piano.